

Electric Modu-Flo II Pump

DESCRIPTION

The electric Modu-Flo II pump is a rugged electric motor driven positive displacement piston pump. It is designed for use with Trabon series progressive divider valves to lubricate all types of machinery using oil or grease up through NLGI #2. The electric Modu-Flo II pump is modular in design and utilizes Modu-Flo reservoirs, components and accessories. The assembly comes complete with electric motor and 20 ft. cable. The 24 VDC version is capable of delivering .29 cu.in./min. (4.7 cc/min.) at pressures up to 2500 psi (170 bar). The 115 VAC version is rated at .58 cu.in./min (9.5 cc/min.) at pressures up to 2500 PSI (170 bar).

FEATURE/BENEFITS

- Used with Trabon series progressive divider valves. The electric Modu-Flo II pump provides automatic centralized lubrication extending the life of machine components and increasing machine productivity.
- The electric motor driven pump is designed for use where air or hydraulics is not available and/or desired.
- Minimizes system cost by reducing hardware and lowers operating costs.
- Enclosed in a rugged metal housing, the 24 VDC Modu-Flo pump is suitable for outdoor applications, and can be used with mobile equipment. The 115 VAC version is suitable for indoor use only.
- Recommended for use with either oil or grease systems up through NLGI #2 dependent upon ambient temperatures. Allows for wide selection of lubricants.
- Designed to allow use with Modu-Flo modular reservoirs, components and accessories. Standard components help reduce inventory.
- 24 VDC version available with built in optional timer.

GENERAL INSTRUCTIONS

The Electric Modu-Flo Pump is mounted to a Modu-Flo pump manifold and wired to the customer's controls per the wiring information. The control output voltage must be greater than 2.0 amps.

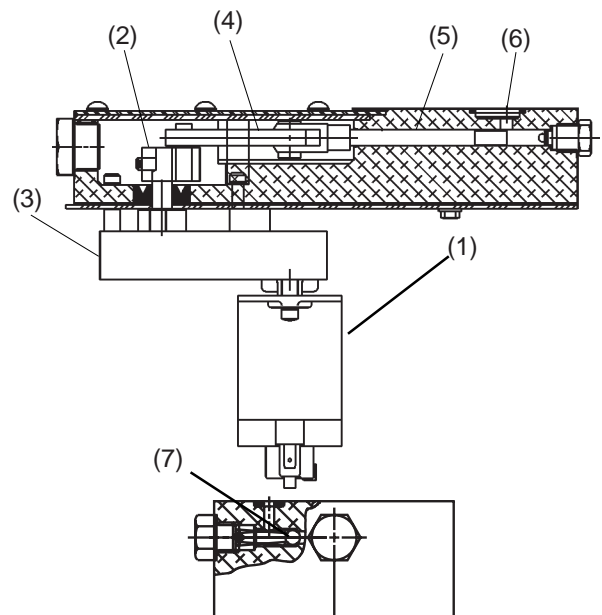
The lubricant being used must be pumpable at ambient operating temperature to ensure proper operation of pump. Consult factory for guidelines.



See bulletin 12000 for additional information on Modu-Flo reservoirs and accessories.

OPERATION

The Electric Modu-Flo II Pump is operated by an electric motor (1) connected to an eccentric (2) thru a reducer gear (3), driving the linkage (4) and piston (5). As the piston moves forward in the power stroke, the inlet (6) is closed off and the lubricant unseats the outlet check valve (7) and delivers the lubricant to the system. As the eccentric continues to rotate, the piston moves back reopening the inlet and returning the piston to full prime position, ready for the next delivery stroke.



SPECIFICATIONS

Standard Pump

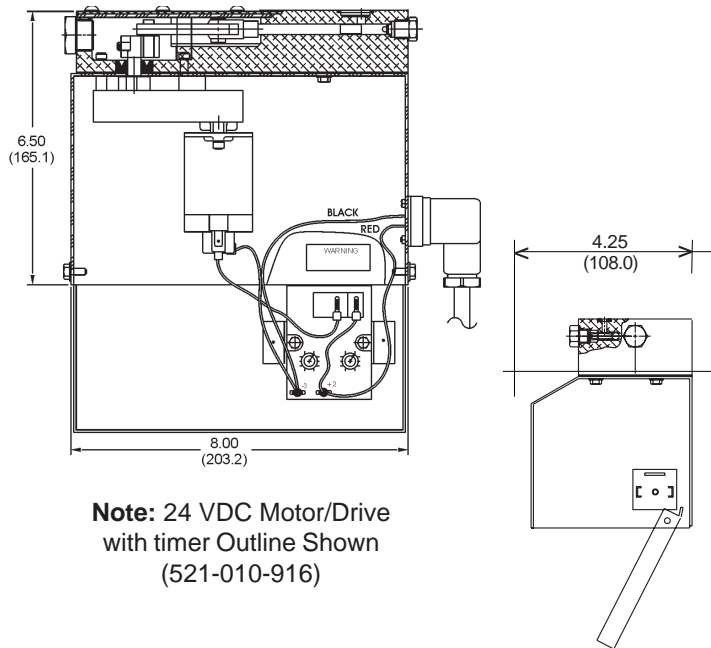
Output per stroke 0.024 cu.in. (0.4 cc)
 Cycle Rate (24 VDC) 12 RPM, (115 VAC) 24 RPM
 Max. Output per Min. (24 VDC) 0.29 cu.in (4.7 cc)
 (115 VAC) .58 cu.in. (9.5cc)
 Max. Operating Pressure 2500 psi (172 bar)
 Lubricants Oil and Grease (up thru NLGI #2)
 *Motor Voltages 24 VDC, 115 VAC
 Current draw 2A (24 VDC), 1.6A (115 VAC)
 @ max. operating pressure
 Electrical Connection Hirschmann
 Duty Cycle: 0-1499 psi (0-103 bar) 50%
 1500-2500 psi (104-172 bar) 25%
 Maximum Run time 4 minutes
 Operating Temp. 20° F to 140° F (-7° C to 60° C)
 (Assumes pumpability of lubricant)
 (Consult factory for lower temperatures)

Operating Environment 24VDC Inside/ Outside
 115 VAC Inside Only

Timer (Option) 24 VDC (ONLY)
 On-Time 1-100 Sec.
 Off-Time02-2 Hrs (1.2-120 Min.)

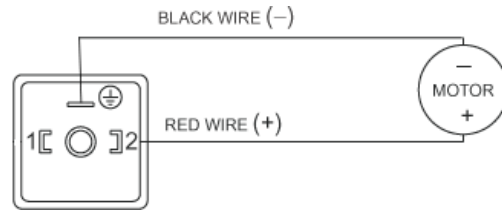
* 24 VDC pump without timer can be operated on 12 VDC.
 Pump output will be reduced to .14 cu.in. per min. and
 current draw will increase to 4A at max. operating pressure.

DIMENSIONS Inches (mm)



WIRING

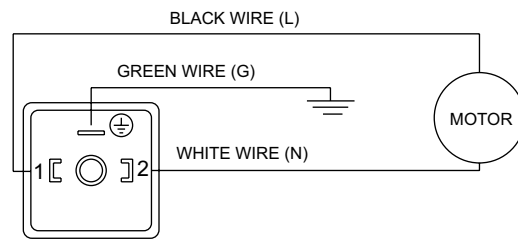
Motor Hook Up (24 VDC)



Customer wiring from harness

Red wire (+)	Customer hook up
Black wire (-)	Customer hook up
Orange	Not Used
Blue	Not Used

Motor Hook Up (115 VAC)



Customer wiring from harness

Black wire (Live)	Customer hook up
White wire (Neutral)	Customer hook up
Green wire (Gn'd)	Customer hook up

HOW TO ORDER

24 VDC motor with 20 ft. conn. cable 521-010-915
 24 VDC motor with 20 ft.
 conn. cable and timer 521-010-916
 24 VDC motor with 20 ft. conn. cable, 12 lb.
 Reservoir, and Low Level Switch 120-505-330
 115 VAC motor with 20 ft. conn. cable 521-007-060
 115 VAC motor without 20 ft. conn. cable ... 521-007-040

SPARE PARTS

20 Ft Connector Cable (24 VDC) 492-240-152
 20 Ft Connector Cable (115 VAC) 492-240-196
 Pump Repair Kit 560-500-221
 24 VDC Gearmotor 493-040-069
 115 VAC Gearmotor 493-040-054

Graco endorses the SAE recommendation of ISO 18/14
 (ISO 4406) oil cleanliness for most bearing applications.
 Some high speed bearings may require cleaner oil.
 Consult the bearing manufacturer for recommendation.

All written and visual data contained in this document are based on the latest product information available at the time of publication. Graco reserves the right to make changes at any time without notice

Call today for product information or to request a demonstration.

1.800.U.S.A.LUBE (1-800-872-5823) or visit us at www.lubriquip.graco.com.

©2006 Graco Inc. Bulletin 12011, March 2007. Printed in U.S.A.

All other brand names or marks are used for identification purposes and are trademarks of their respective owners.

