

Wall Mounted Manual Pump

DESCRIPTION

The Trabon Wall Mounted Manual Pump is a rugged, yet inexpensive pump that is designed for use on small machines. The pump comes complete with mounting brackets for easy installation. It can be used with Trabon MSP, MJ or MD Divider Valves where limited number of bearings are to be lubricated. Filling is facilitated thru a fill stud located on the bottom of the pump.

Two pump models are available, oil or grease. The oil pump is equipped with a clear plastic reservoir giving a visual indication of reservoir level. The grease pump is equipped with a metal reservoir and a disappearing handle with follower which indicates level of lubricant.

FEATURES/BENEFITS

- Inexpensive
- Automatic Relief
- Fill Stud
- Visual Level Indicator
- Easy to Mount
- Rugged Construction

SPECIFICATIONS

Pump Body Material	Steel or Plastic
Rated Pressure (max.)	3000 PSI (210.9 kg/cm ³)
Lubricant	Oil or Grease
Pump Output per Stroke	0.100 in ³ (1.6 cc)
Reservoir Capacity	
Grease	1 lb. (0.45 kg.)
Oil	1 pint (0.4 liters)
Reservoir Material	
Grease	Steel
Oil	Plastic
Net Weight (approx.)	
Grease	3 lbs., 14 ozs. (1.78kg.)
Oil	2 lbs., 13 ozs. (1.30 kg.)

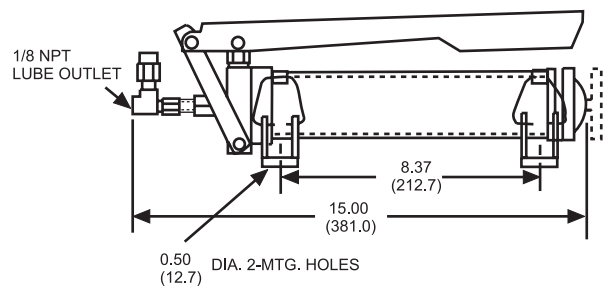


ORDERING INFORMATION

Wall Mounted Manual Pump

To order this assembly	Specify Part No.
Oil	142-000-540
Grease	142-000-520

DIMENSIONS Inches/(mm)



All written and visual data contained in this document are based on the latest product information available at the time of publication. Graco reserves the right to make changes at any time without notice

Call today for product information or to request a demonstration.

1.800.U.S.A.LUBE (1-800-872-5823) or visit us at www.lubriquip.graco.com.

©2006 Graco Inc. Bulletin 12406, July 1986. Printed in U.S.A.

All other brand names or marks are used for identification purposes and are trademarks of their respective owners.

