

Anchor Fittings

DESCRIPTION

These fittings from Graco® are for use with Trabon® lubrication systems. The fittings are designed for simplicity of use and long life. They provide a solid base for mounting pressure gauges and performance indicators...for connecting hoses to lube lines...for attaching lines to machines or equipment...for adding branch lines or facilitating abrupt changes in line direction.

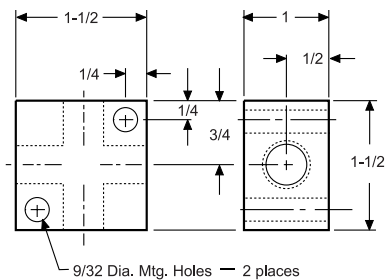
HOW TO ORDER

Use **both** the full name of the fitting and its Part Number.

Dimensions — Inches

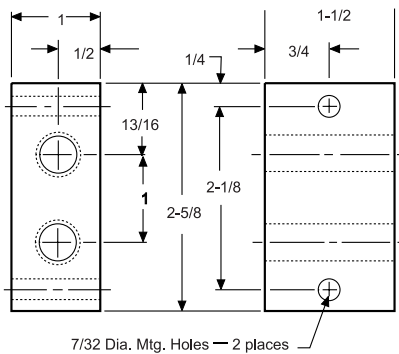
Cross Anchor Fitting (plated steel)

1/4 NPSF, Part No. 509-188-000
 1/8 NPSF, Part No. 509-189-000

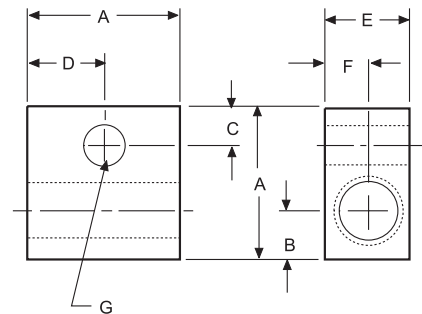


180° Straight Anchor Fitting-2 Lines (plated steel)

1/4 NPSF, Part No. 542-171-000



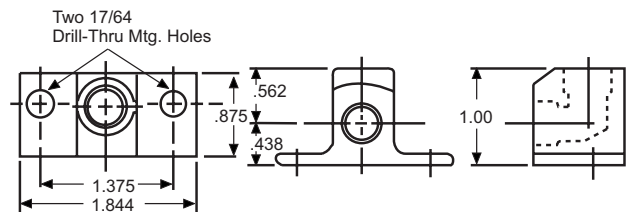
180° Straight Anchor Fitting (plated steel)



NPSF	DIMENSIONS							PART NUMBER
	A	B	C	D	E	F	G (DIA.)	
1/8	1-1/4	11/32	5/16	5/8	3/4	3/8	9/32	509-180-000
1/4	1-1/2	19/32	5/16	3/4	1.0	3/8	11/32	509-185-001
1/2	1-3/4	9/16	7/16	7/8	1-1/4	5/8	1/2	509-195-000

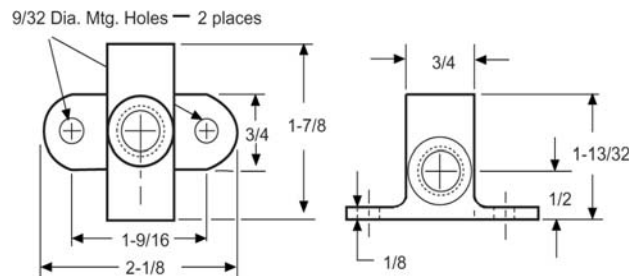
90° Drop Elbow (brass)

1/8 NPSF, Part No. 509-150-000



Wing Tee (plated steel)

1/4 NPTF, Part No. 509-164-001



All written and visual data contained in this document are based on the latest product information available at the time of publication. Graco reserves the right to make changes at any time without notice.

Call today for product information or to request a demonstration.

1.800.U.S.A.LUBE (1-800-872-5823) or visit us at www.lubriquip.graco.com.

©2006 Graco Inc. Bulletin 15121, November 2005. Printed in U.S.A.

All other brand names or marks are used for identification purposes and are trademarks of their respective owners.