

KIPP® Model DSL Lubricators Instructions & Parts Manual

STEP-BY-STEP GUIDE TO STARTING...ADJUSTING RATE OF FLOW AND MAINTAINING YOUR DSL LUBRICATOR

The Madison-Kipp DSL Lubricator is manufactured and designed so that each pumping unit can be individually adjusted for the exact amount of lubricating oil to be fed to a given position.

The lubricator supplied with your equipment has been installed and tested according to the manufacturer's recommendation. The Settings have been determined to be the optimum and should not be changed unless conditions definitely warrant this change.

The operation and adjustment methods are described by brief but complete instructions which are give on a metal instructions plate attached to the side of the lubricator reservoir. For purposes of record, these instructions are repeated below:

TO START:

- Fill reservoir with oil
- Remove part 60021 or 60130 from sight dome
- Fill dome to upper line with oil
- Replace and tighten 60021 or 60130 (finger tight only)
- Remove hex coupling nut on outlet fitting
- Prime by manually pumping spindle in front of sight dome until air bubbles are purged and oil is clear.
- Retighten outlet nut

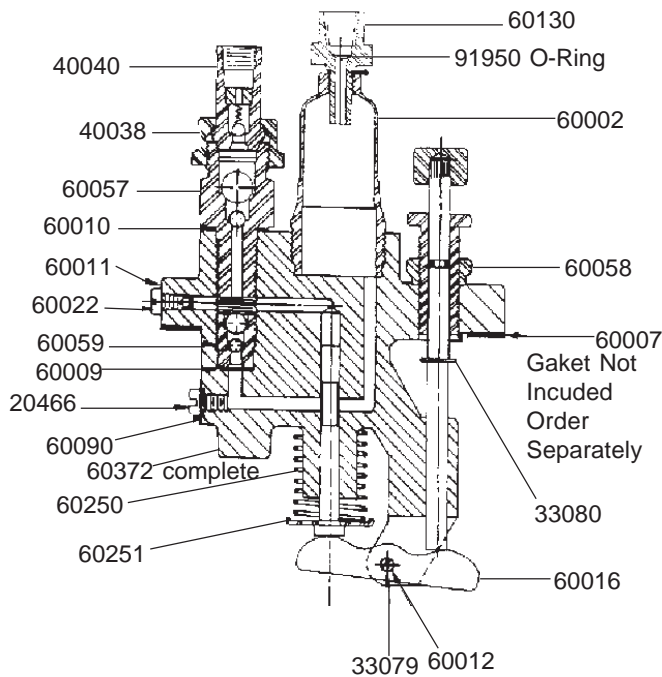
TO ADJUST RATE OF FLOW:

- Loosen lock nut on adjusting gland
- To increase flow, turn adjusting gland counter-clockwise: to decrease turn clockwise
- Tighten lower nut

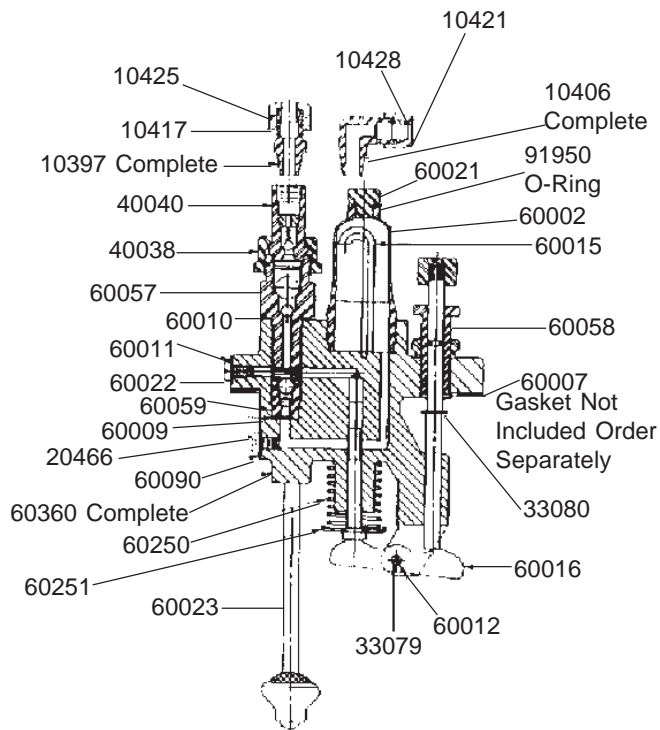


TO MAINTAIN YOUR LUBRICATOR AT PEAK PERFORMANCE

- Use only clean oil
- Keep lubricator reservoir full of oil
- See that all connections are tight
- See that oil leads are supported where excessive vibration occurs.
- Check driving device to make sure that studs and links are tight or that the belt is in good condition



**PUMPING UNIT
PRESSURIZED INLET**



PUMPING UNIT - STD.

PARTS LIST

Part No.	Description
10397	St. Terminal Conn. Assy. w/10425 and 10417
10406	Angle Terminal Conn. Assy. w/10428 and 10421
10417	Cinch nut (use w/single Cone Ferrule)
10421	Cinch Nut (use w/Double Cone Ferrule)
10425	Ferrule (Single Cone for 1/4" O.D. Tubing)
10428	Ferrule (Double Cone for 1/4" O.D. Tubing)
20466	Screw
40038	Union Nut
40040	Outlet Tailpiece Assy.
40136	Spring Retainer
60002	Single Dome
60007	Gasket
60009	Gasket
60010	Gasket
60011	Gasket
60012	Rocker Arm Pin
60013	Plunger Spring
60015	Drip Tube
60016	Rocker Arm
60021	Vent Screw
60022	Screw
60023	Suction Tube Assembly
60025	Pumping Unit Assy.-Complete
60057	Outlet Valve Assembly
60058	Spindle Assembly
60059	Valve Cage Assembly
60090	Gasket
60132	Pumping Unit Assembly Complete (Pressurized Inlet)
60130	Adapter
60131	Sight Dome (Special)
91950	O-Ring
33079	Snap Ring
33080	Snap Ring

All written and visual data contained in this document are based on the latest product information available at the time of publication. Graco reserves the right to make changes at any time without notice.

Call today for product information or to request a demonstration.

1.800.U.S.A.LUBE (1-800-872-5823) or visit us at www.lubriquip.graco.com.

©2006 Graco Inc. Bulletin L-6101. Printed in U.S.A.

All other brand names or marks are used for identification purposes and are trademarks of their respective owners.

